

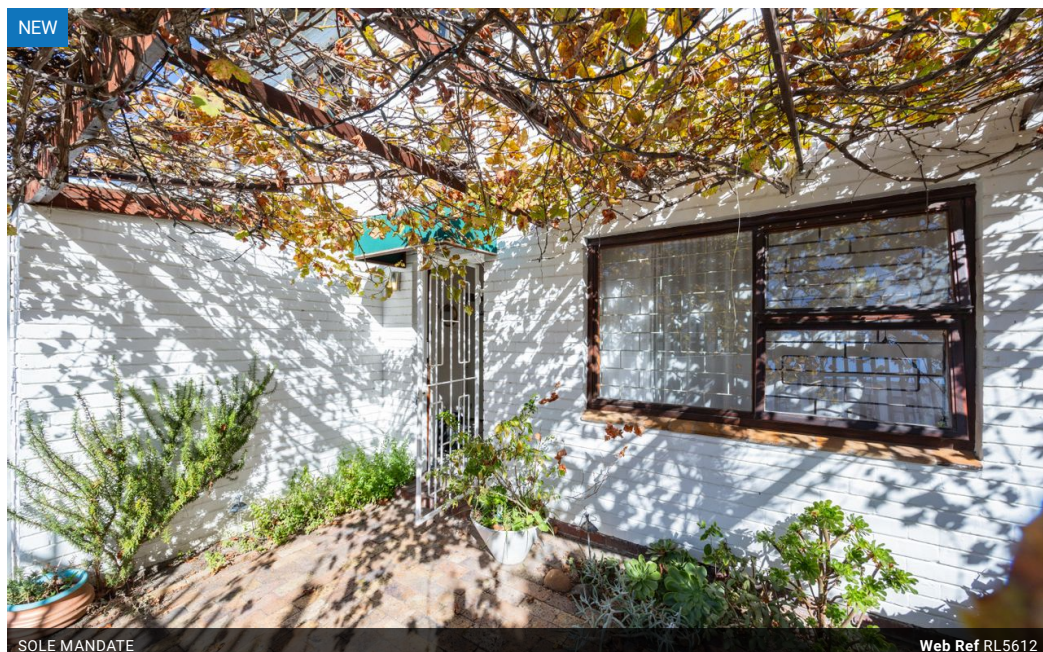


Nicole Campbell
0716413568
nicolec@fmssalesandleasing.co.za

Contact Head Office

021 815 5700

5th Floor
The Terraces
25 Protea Road
Claremont
Cape Town



SOLE MANDATE

Web Ref RL5612



R1,400,000

2 1 1

Monthly Bond Repayment R14,450.64

Calculated over 20 years at 11% with no deposit.

Transfer Costs R40,617.00 **Bond Costs** R27,105.00

These calculations are only a guide. Please ask your conveyancer for exact calculations.

Monthly Levy R2,758 **Monthly Rates** R360

Pet-Friendly 2 Bedroom Townhouse in Tranquil Plumstead Cul-De-Sac

Exclusively listed with FMS Sales and Leasing

Nestled in a quiet cul-de-sac in the heart of Plumstead, this charming two-bedroom townhouse offers a serene and pet-friendly retreat. The open-plan lounge and dining area are bathed in natural light, creating a warm and inviting space for relaxing or entertaining. Large windows frame the living area, while the seamless flow to the private courtyard enhances the sense of space. Covered by a picturesque pergola adorned with grapevine, the courtyard is a peaceful escape, perfect for outdoor dining or simply unwinding in a tranquil setting.

The well-appointed kitchen features built-in cupboards and leads to a separate laundry area, already fitted with plumbing for a washing machine and offering potential for a dishwasher. The thoughtful layout ensures functionality and...

Features

Pets Allowed		Yes			
Interior		Exterior		Sizes	
Bedrooms	2	Garages	1	Floor Size	65m ²
Bathrooms	1	Security	Yes	Land Size	1,335m ²
Kitchens	1	Pool	No		
Recep. Rooms	2				
Extras					
Built-in Wardrobes Pets Allowed Private Garden Security Burglar Bars Electric Gate Electric Fencing Security Gate					